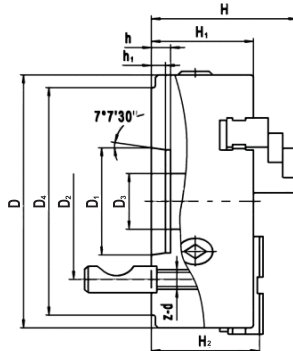


## THREE JAW SELF CENTERING SCROLL CHUCKS - DIRECT MOUNT TYPE "D" TOP REVERSIBLE JAWS

American standard two-piece tongue and groove jaws.  
Scroll and jaws hardened and ground. Top reversible jaws.  
Semi-steel body.

### SUPPLIED WITH:

Master jaws and top jaws  
T-Wrench  
Mounting cam studs



### PRINCIPAL SPECIFICATIONS

SIZE	MODEL	SPINDLE	WEIGHT	D	D1	D2	D3	D4	H	H1	H2	h	h1	Z-d
6"	6063D3	D1-3	32	6.299	2.125	2.780	1.575	3.622	4.724	2.992	3.189	0.512	0.394	3-M10X1
6"	6063D4	D1-4	32	6.299	2.500	3.252	1.575	4.606	4.488	2.756	2.756	0.512	0.394	3-M10X1
6"	6063D5	D1-5	32	6.299	3.250	4.126	1.575	5.748	4.606	2.874	2.874	0.591	0.472	6-M12X1
8"	6083D4	D1-4	47	7.874	2.500	3.252	1.969	4.606	5.236	3.386	3.307	0.512	0.394	3-M10X1
8"	6083D5	D1-5	47	7.874	3.250	4.126	1.969	5.748	5.236	3.386	3.307	0.591	0.472	6-M12X1
8"	6083D6	D1-6	47	7.874	4.188	5.252	1.969	7.126	5.236	3.386	3.307	0.630	0.512	6-M16X1.5
10"	6103D5	D1-5	74	9.843	3.250	4.126	2.756	5.748	3.866	3.740	3.740	0.591	0.472	6-M12X1
10"	6103D6	D1-6	74	9.843	4.188	5.252	2.756	7.126	5.984	3.858	4.055	0.630	0.512	6-M16X1.5
10"	6103D8	D1-8	74	9.843	5.500	6.748	3.150	8.858	5.984	3.858	4.055	0.709	0.551	6-M20X1.5
12"	6123D6	D1-6	142	12.795	4.188	5.252	3.937	7.126	6.654	4.173	4.173	0.630	0.512	6-M16X1.5
12"	6123D8	D1-8	142	12.795	5.500	6.748	3.937	8.858	6.654	4.173	4.173	0.709	0.551	6-M20X1.5
12"	6123D11	D1-11	142	12.795	7.751	9.252	3.937	11.732	6.654	4.173	4.173	0.787	0.630	6-M22X1.5
15"	6153D8	D1-8	155	14.961	5.500	6.748	5.118	8.858	7.540	4.646	5.020	0.709	0.551	6-M20X1.5
15"	6153D11	D1-11	155	14.961	7.751	9.252	5.315	11.732	7.540	4.646	5.020	0.787	0.630	6-M22X1.5
20"	6203D8	D1-8	320	19.685	5.500	6.748	7.480	8.858	8.740	5.315	5.748	0.709	0.551	6-M20X1.5
20"	6203D11	D1-11	320	19.685	7.751	9.252	7.480	11.732	8.740	5.315	5.748	0.787	0.630	6-M22X1.5
20"	6203D15	D1-15	320	19.685	11.251	13.000	8.268	15.866	8.740	5.315	5.748	0.827	0.669	6-M24X1.5

## THREE JAW SELF CENTERING SCROLL CHUCKS - DIRECT MOUNT TYPE "D" TOP REVERSIBLE JAWS

### FORGED STEEL BODY- HEAVY DUTY

American standard two-piece tongue and groove jaws.  
Scroll and jaws hardened and ground. Top reversible jaws.

### SUPPLIED WITH:

Top reversible jaws  
T - Wrench  
Mounting cam studs



### PRINCIPAL SPECIFICATIONS

SIZE	MODEL	SPINDLE	WEIGHT	D	D1	D2	D3	H	H1	h	Z-d
6"	6063D4SB	D1-4	32	6.299	2.5	3.252	1.575	4.488	2.756	0.512	3-M10x1
8"	6083D6SB	D1-6	47	7.874	4.188	5.252	1.969	5.236	3.386	0.630	6-M16x1.5
10"	6103D6SB	D1-6	74	9.843	4.188	5.252	2.756	5.984	3.858	0.630	6-M16x1.5
10"	6103D8SB	D1-8	74	9.843	5.500	6.748	3.150	5.984	3.858	0.709	6-M20x1.5
12"	6123D8SB	D1-8	142	12.8	5.500	6.748	3.937	6.654	4.173	0.709	6-M20x1.5

0.003" TIR repeatability and meet ASA specifications on duplicate parts for chucks through 12"

SEE PAGE 23 FOR REPLACEMENT PARTS